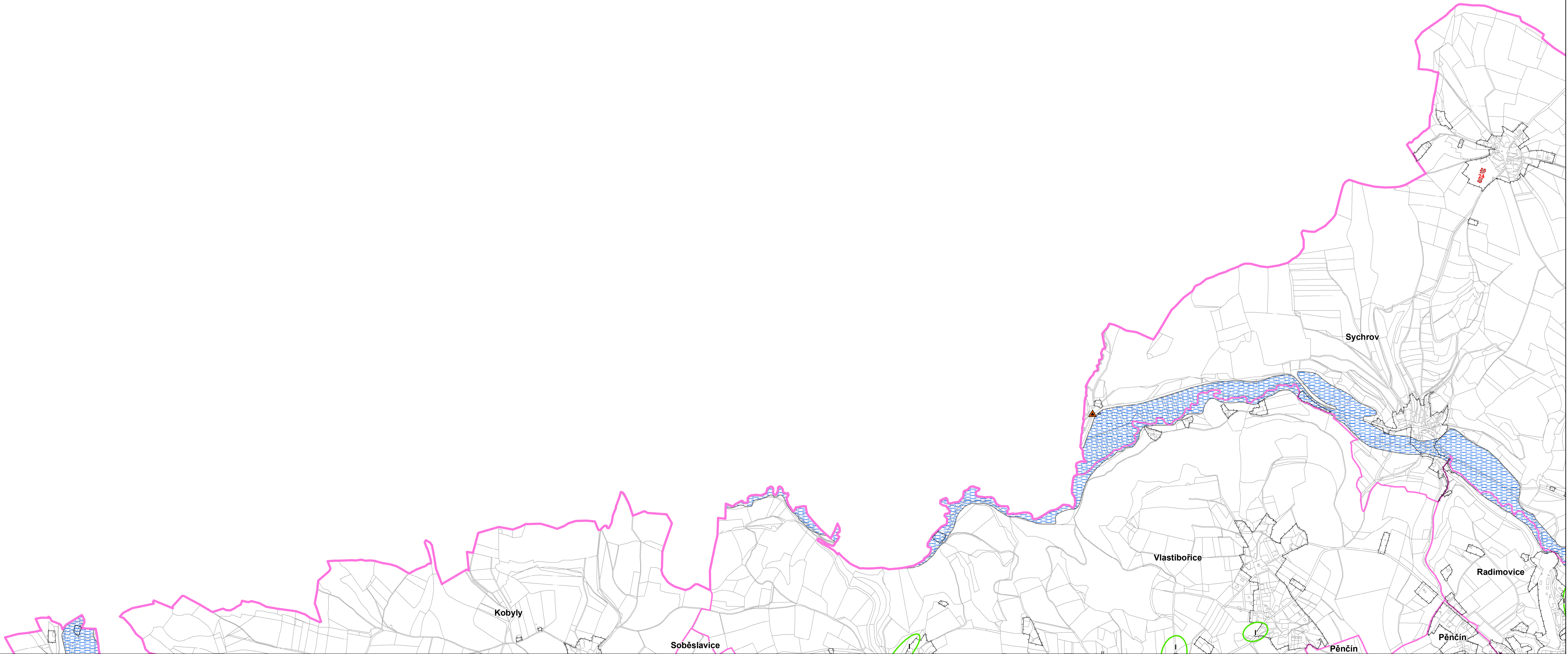
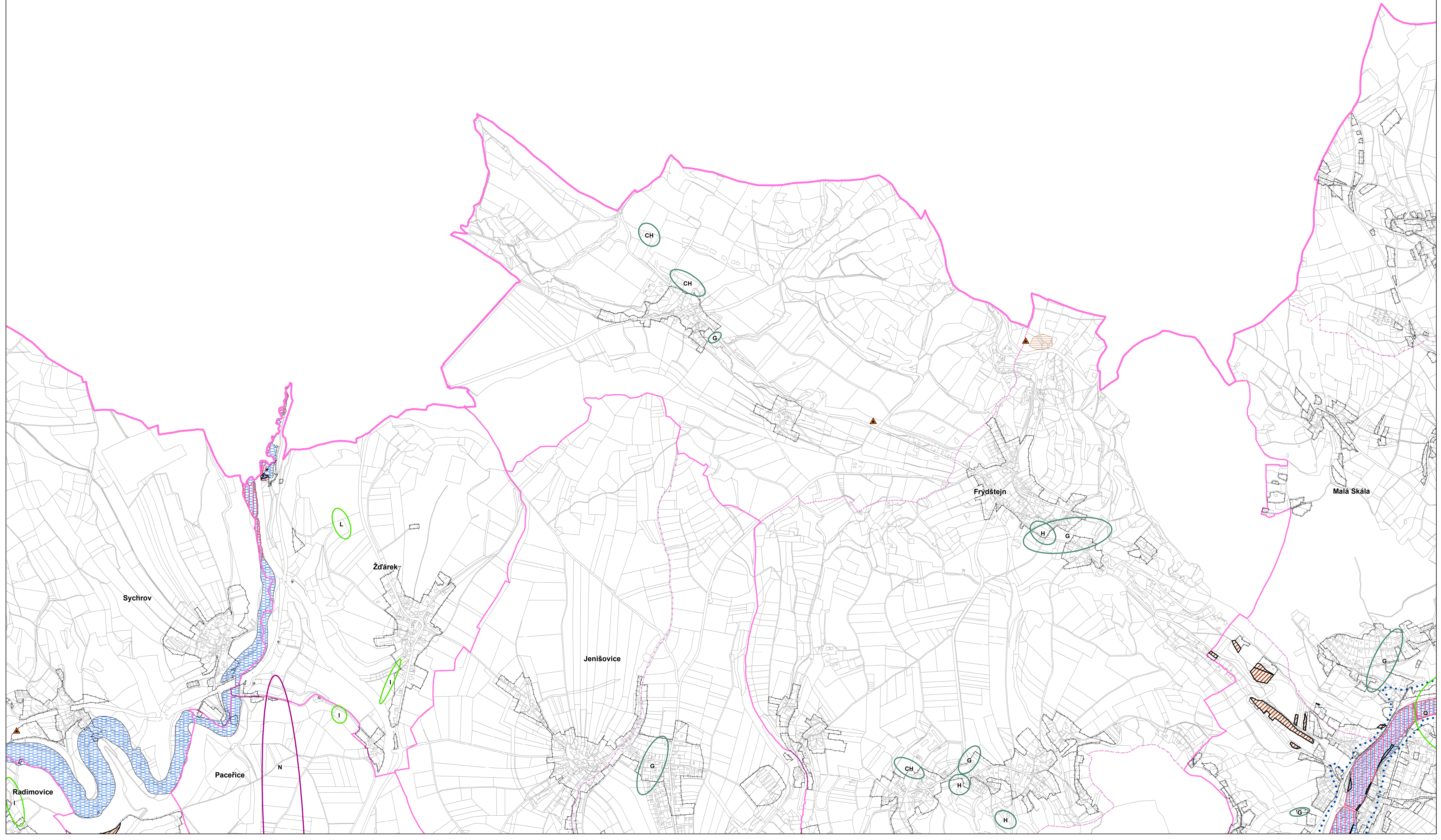
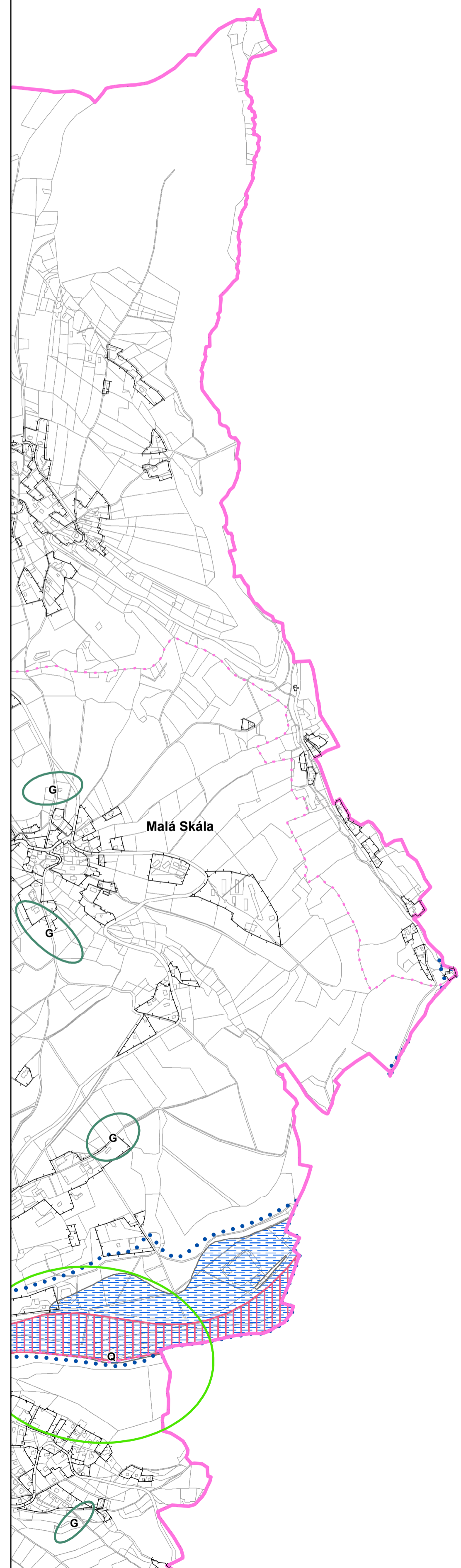


# VÝKRES PROBLÉMŮ K ŘEŠENÍ V ÚPD

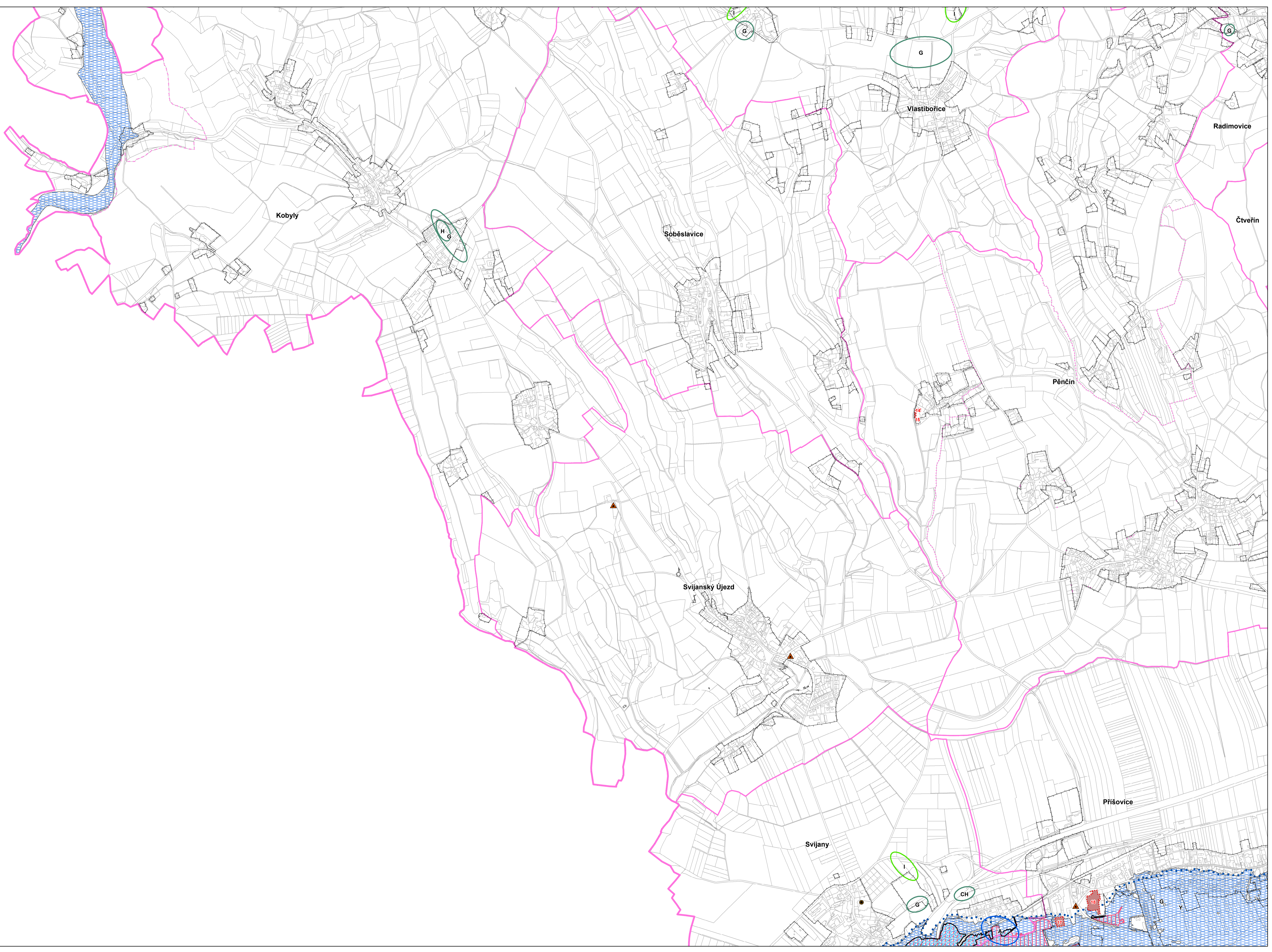
A1







B1



B2

Radimovice

Sychrov

N

Paceřice

Jenišovice

Frydštejn

Malá Skála

Rakousy

Čtyřetín

Lažany

Pěnčín

Ohrazenice

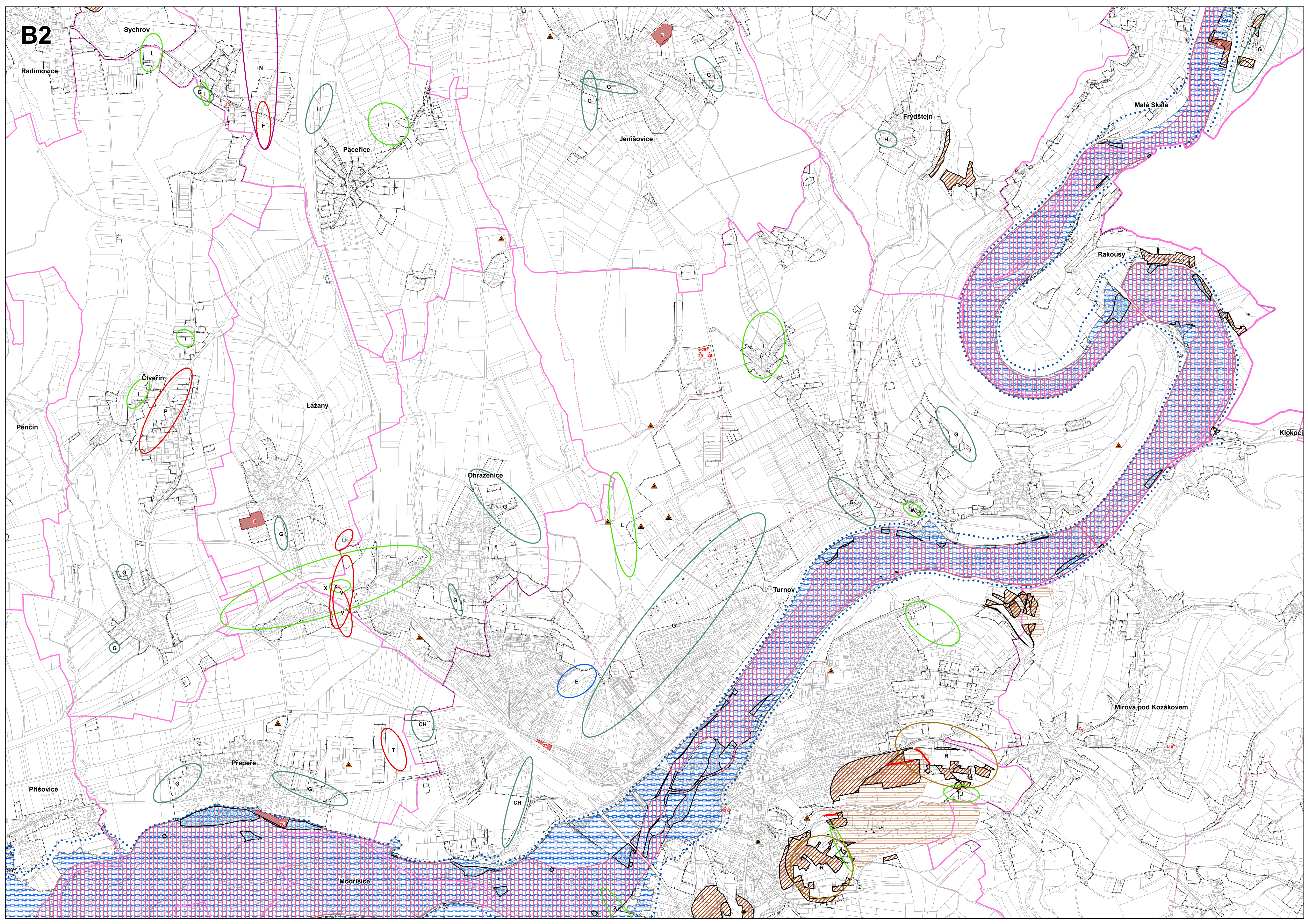
Turnov

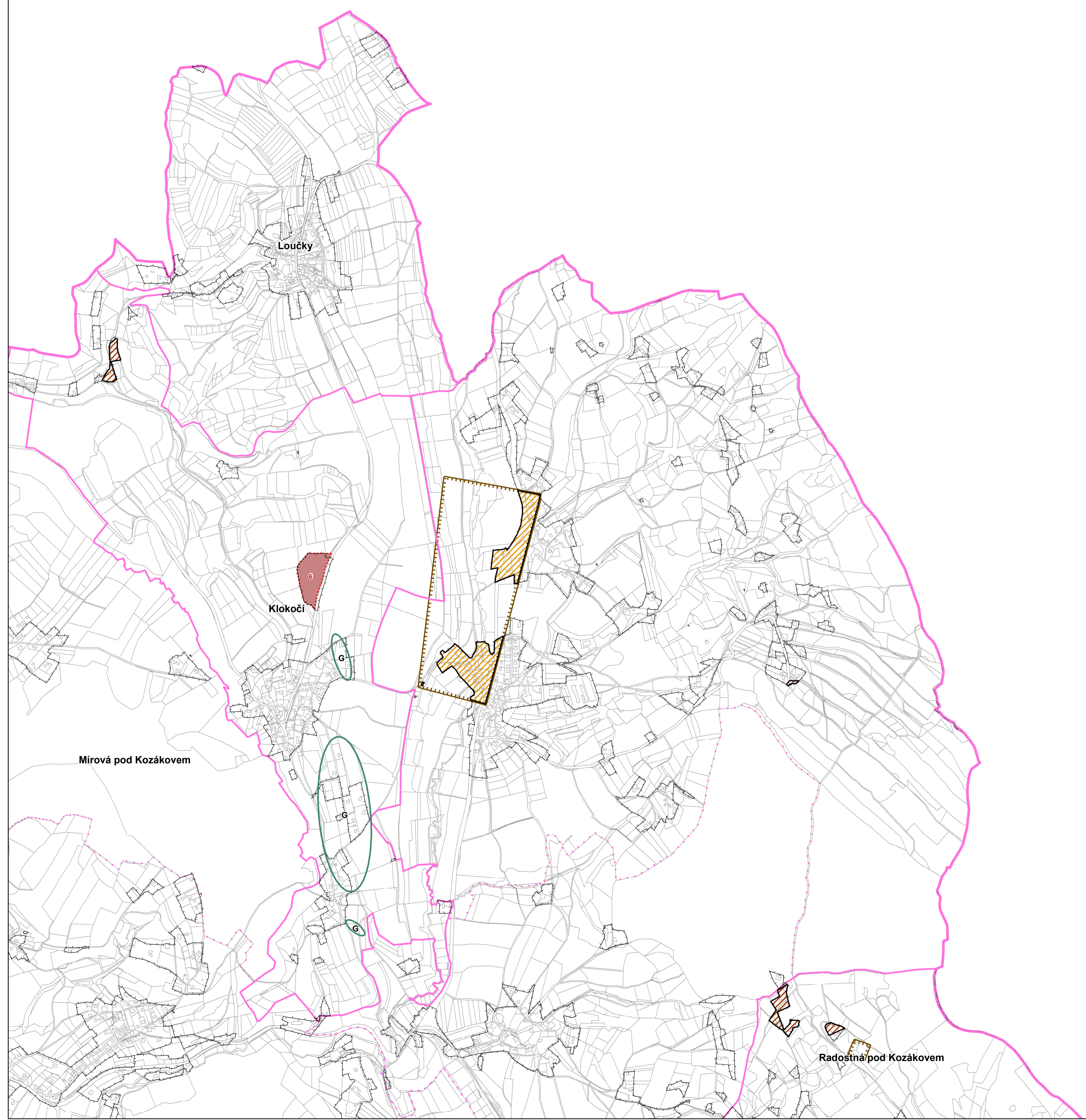
Mírová pod Kozákovem

Příšovice

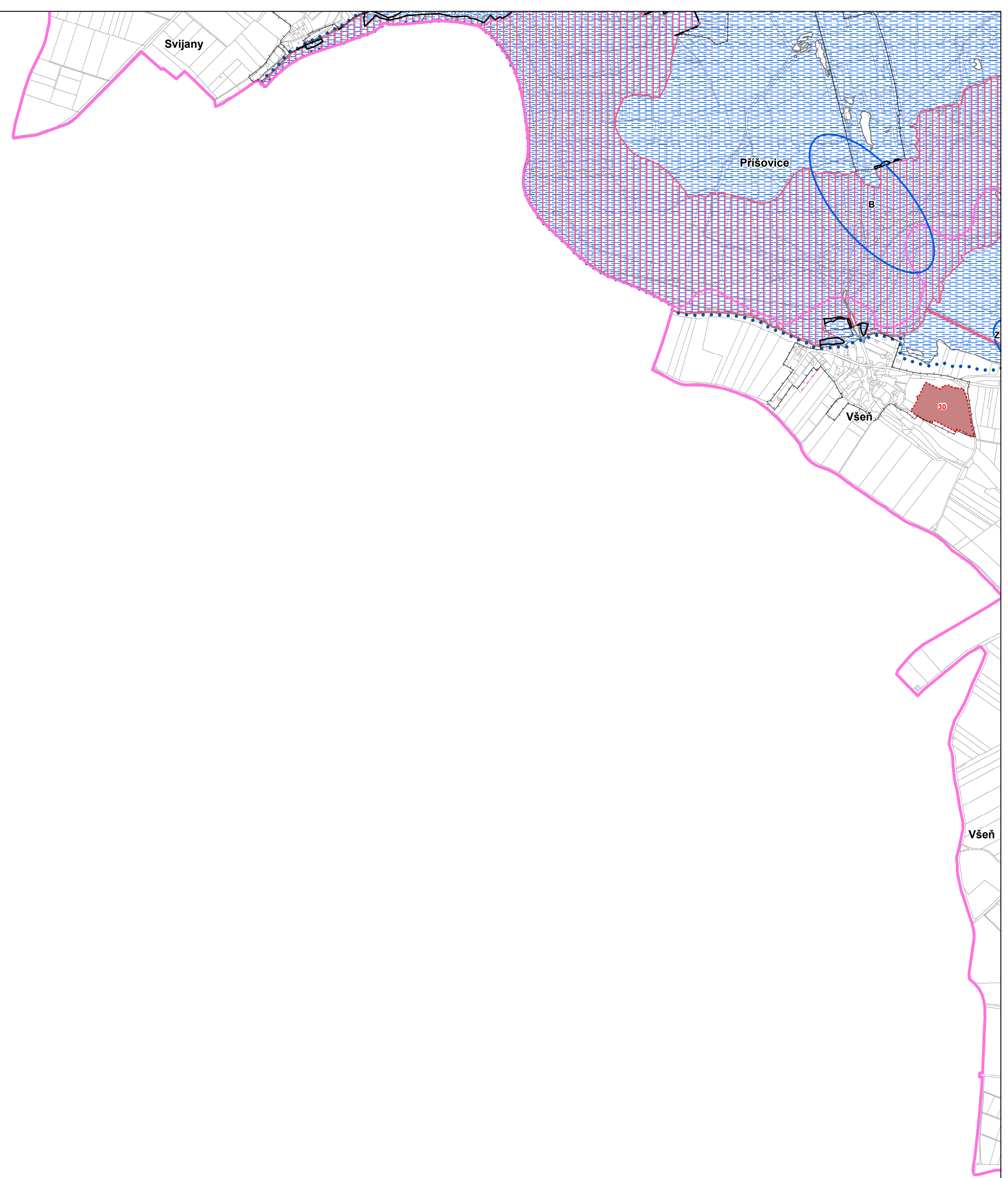
Prepeře

Modříšice





C1



C2

Příšovice

Prepeře

Prepeře

Modřišice

Turnov

Mírová pod Kozákovem

Karlovice

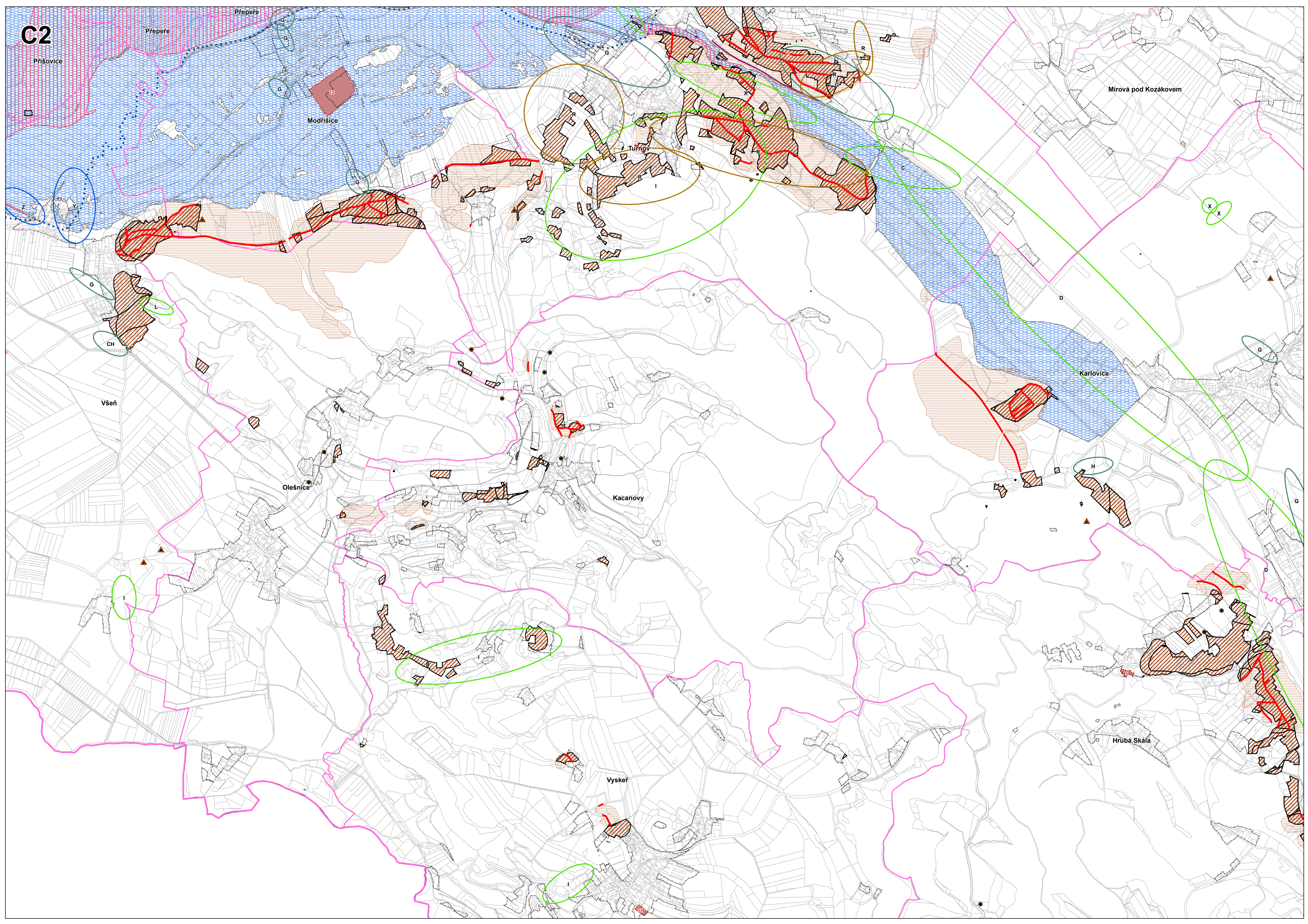
Všeň

Olešnice

Kacanov

Hrubá Skála

Vyskeř





C3

Mirová pod Kozákovem

Radostná pod Kozákovem

Karlovice

Tatobity

Zernov

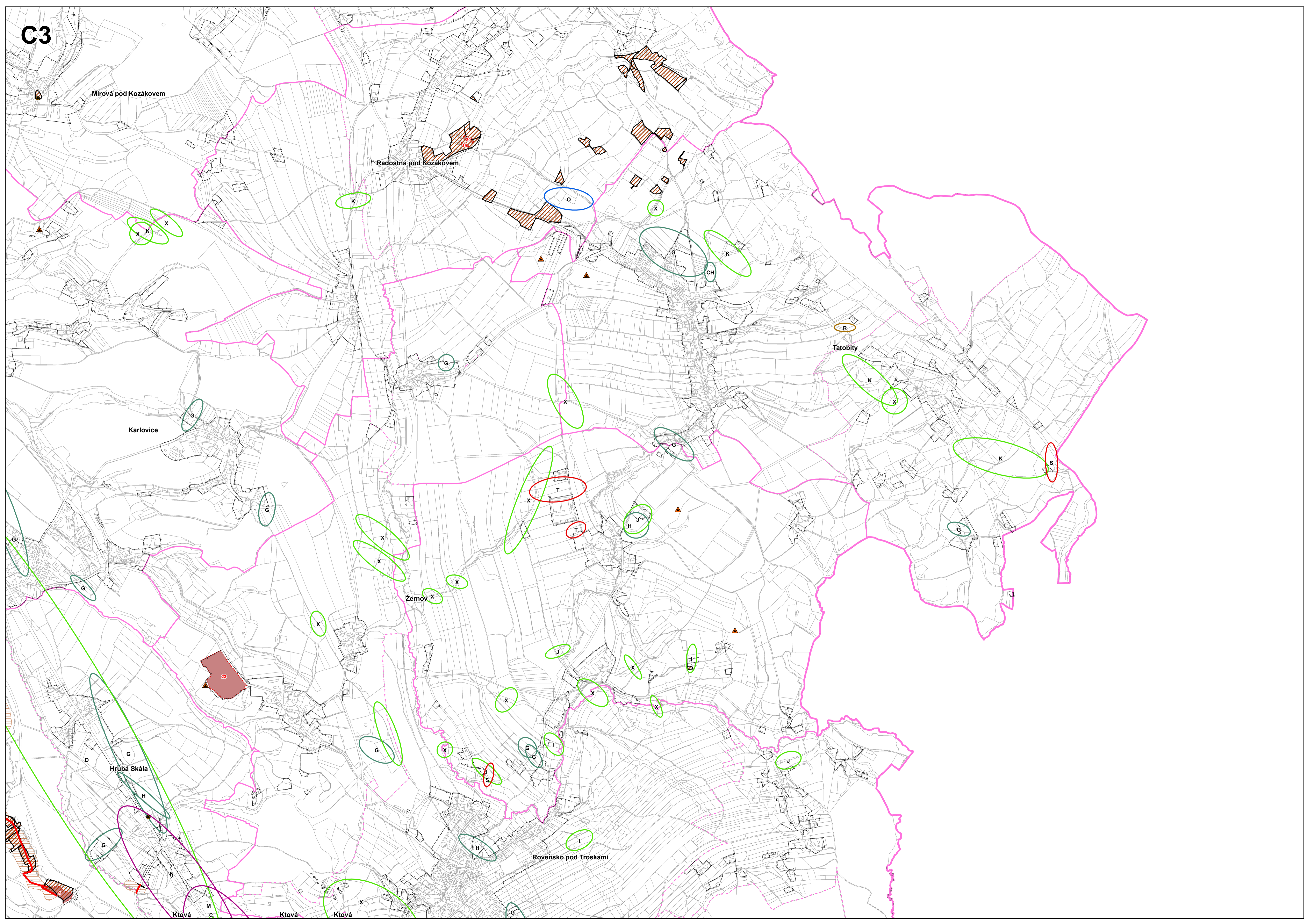
Hrubá Skála

Rovensko pod Troskami

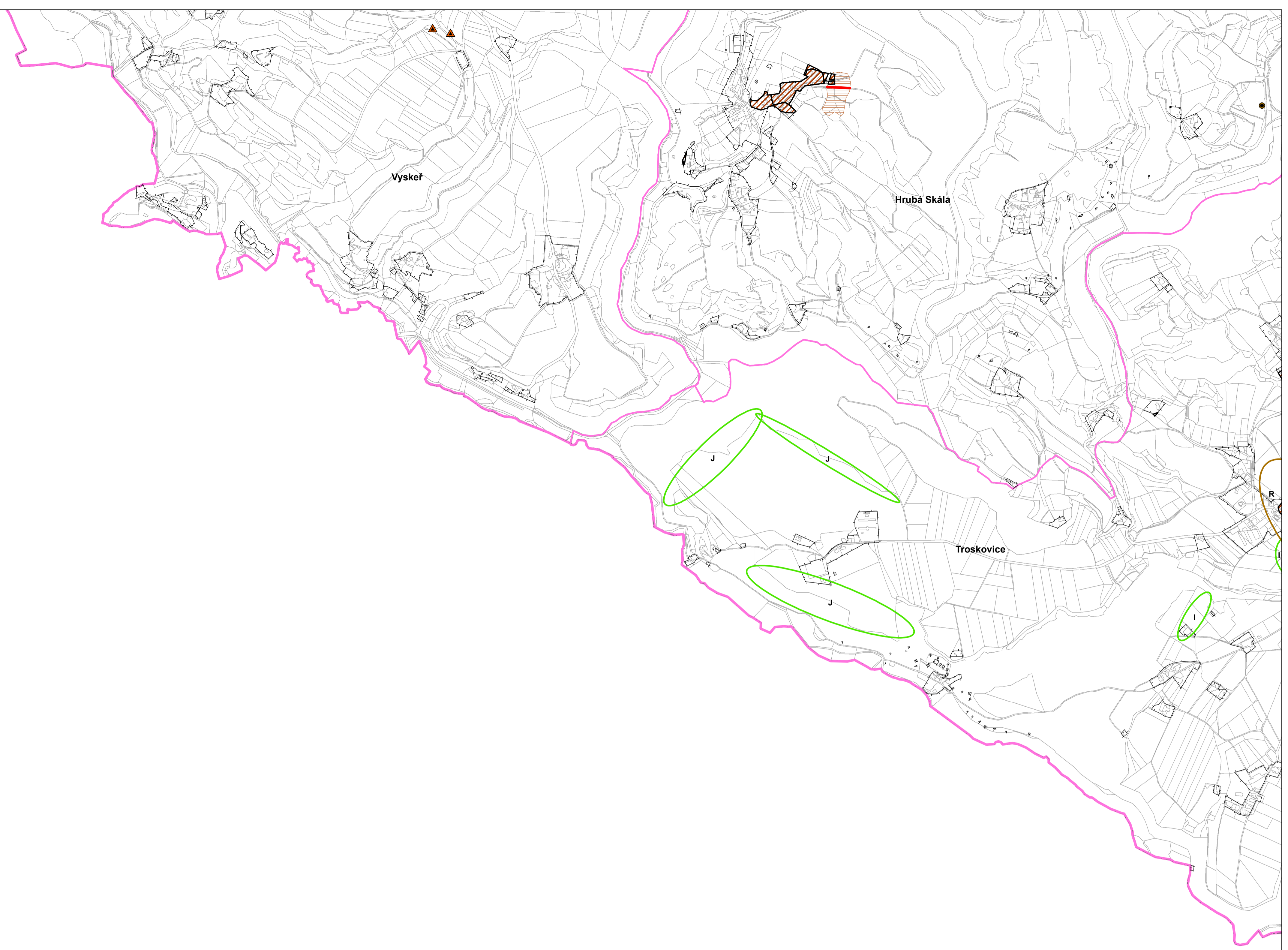
Ktová

Ktová

Ktová



D1




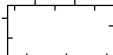


D2









# LEGENDA VÝKRESU PROBLÉMŮ K ŘEŠENÍ V ÚPD








## Administrativní členění

-  Hranice SO ORP Turnov
-  Hranice obcí
-  Hranice katastrálního území
-  Zastavěné území







## Závady

-  ZU\_PO Zastavěné území v poddolovaném území
-  ZU\_SE Zastavěné území v sesuvném území
-  ZU\_ZA Zastavěné území v záplavovém území
-  Brownfields
-  Silnice v aktivním sesuvu
-  Železnice v aktivním sesuvu

## Ohrožení

-  Staré zátěže území a kontaminované plochy
-  Aktivní sesuv
-  Aktivní sesuv - plošný
-  Poddolované území - plošné
-  Území zvláštní povodně pod vodním dílem
-  Záplavové území Q100
-  Aktivní zóna záplavového území

## Střety

-  Vodní hospodářství - A, B, E, O, Y, Z
-  Ochrana přírody a krajiny - C, D, I, J, K, L, Q, W, X
-  Technická infrastruktura - G, H, CH
-  Dopravní infrastruktura - F, P, S, T, U, V
-  Kultura a urbanismus - M, N
-  Geologie - R

